

# ↑ Rippe Gelbvieh

## 13th Annual Bull Sale

56 Balancer & Gelbvieh Bulls

**SATURDAY, MARCH 10, 2:00 P.M.**

*Complimentary Lunch - 12:00*

★ **SALE LOCATION: Belleville 81 Livestock - Belleville, KS** ★



2012

## **Greetings Cattlemen:**

Rippe Gelbvieh has continued to assemble a cowherd that is balanced in ALL traits that are economically important to our customers—commercial cattlemen. At Rippe Gelbvieh, we would like to have the opportunity to put our genetics and crossbreeding program to work on your operation. We have a complete lineup of Balancer and Purebred bulls that have enough genetic variation to compliment your cowherd and allow you to take full advantage of the “free lunch” that heterosis and hybrid vigor offer.

I feel we are doing more from a genetic selection and testing standpoint than the majority of seed stock operations. I believe we are separating ourselves from other seed stock operations in two main areas. The first is carcass data. Most operations ultrasound scan *or* DNA their bulls, but how many scan their bulls, scan their heifers, and receive individual carcass data on all of their steers? In addition, we try and receive data from a few of our customers’ cattle each year to measure our success from a carcass standpoint. We feed cattle throughout the year. A lot of people just talk about it. The second area is measuring cow size and efficiency. Each cow is weighed every fall when we pregnancy test. Later, this is compared to the weaning weight of their calf. We also track the essentials in a cow like structure and udder scores. This year we included all of this data in the catalog. It is our hope that you find the more information we track valuable. It is important for us at Rippe Gelbvieh to track our cowherd and our bulls so that we can make genetic progress.

Be sure to check our website, [www.rippegelbvieh.com](http://www.rippegelbvieh.com), as the sale draws near. We will be posting additional information including the supplement sheet and videos of the bulls. We encourage each of you to visit us prior to the sale. These visits allow us a lot more time to understand your program’s needs and wants so we can better assist you in selecting your new herd sire.

As always, we look forward to visiting with past customers and making new ones. Allow our program to help maximize the profitability of your cowherd.

Duane & Dustin Rippe

## **Contact Information**

### **Duane & Brenda Rippe**

6775 Road D – Hubbell, NE 68375

H-402-324-4176 C-402-200-0096

Email: [rippe@rhelectric.net](mailto:rippe@rhelectric.net)

### **Dustin & Karla Rippe**

C-316-323-4874

Email: [rippe02@yahoo.com](mailto:rippe02@yahoo.com)

### **Wayne & Kay Kugel**

C-402-768-3420

Email: [thekugels@diodecom.net](mailto:thekugels@diodecom.net)

### **Michael Rea**

C-303-718-2124

Email: [mikerea6@rams.colostate.edu](mailto:mikerea6@rams.colostate.edu)

# General Information – Terms & Conditions

## Sale Location:

Belleville 81 Livestock, which is ½ mile south of the Hwy 81 and 36 intersections.

## Auctioneer:

Kyle Ellwood, Salina, KS ..... 785-493-2901

## Ringmen:

Galen Gerdes, Nebraska Farmer ..... 308-380-0302

Troy Appleheans, Centennial, CO ..... 303-886-0775

## Supplement Sheet:

A supplement sheet will be available on sale day with the updated EPD's, yearling data, ultrasound information, and scrotal measurements. The information will also be posted on our website about two weeks prior to the sale. Any information on the supplement sheet or announced on sale day will take precedence over the catalogue.

## Health:

All bulls will be ready for interstate shipment. They will be BVD tested and had their Lepto shot. In addition, they will have passed a Breeding Soundness Exam along with being poured with an invomectin type of product before delivery.

## Terms and Conditions:

Cash on sale day. All cattle will sell under the recommended terms of the AGA. If you would like to be offered credit, please call Duane prior to sale day.

## Volume Discount:

If you purchase five or more bulls in one year, you will receive 5% off the price of each bull.

## Delivery & Trucking:

Free delivery within 250 miles. For all bulls further than 250 miles, we will make every effort to accommodate the buyer. We will feed and care for your yearling bulls for free until April 1<sup>st</sup>.

## Transfers:

All registration papers will be transferred. In addition, a homozygous black certificate can be transferred if the buyer so chooses.

## Liability:

Neither the sale host, sale facility, sale management, nor the auctioneer assumes any liability for any accidents that may occur.

## Sale Day Phones:

Sale Barn ..... 785-527-2558

Duane Rippe ..... 402-200-0096

Dustin Rippe ..... 316-323-4874

Wayne Kugel ..... 402-768-3420

Michael Rea ..... 303-718-2124

***Viewing of the sale will be available on Belleville 81 Livestock's website at [www.belleville81.com](http://www.belleville81.com). If you are interested in bidding, please contact us prior to the sale or call one of our sale day phones.***

## Website:

[www.rippegelbvieh.com](http://www.rippegelbvieh.com)

***Videos of the bulls  
will be on the website***

## **Rippe Gelbvieh Bull Guarantee**

- Our # 1 goal is customer satisfaction.
- Rippe Gelbvieh takes 100% responsibility on every bull purchased from our sale until the bull is delivered to your ranch. If there is any problem with the bull upon delivery or at our place we will cover the cost completely and make sure you are satisfied.
- If you experience a problem with disposition or structural soundness soon after you receive your purchase, Rippe Gelbvieh will replace the bull with similar quality, take the bull back and offer credit on next year's sale, or give you a full refund of your money.
- If you experience abnormal calving difficulty where the herd sire is at fault we demand that the bull be sold for slaughter and a full refund applied to a replacement bull of the buyer's choice.

### **First Season Death and Injury Warranty**

Rippe Gelbvieh has offered to share this cost with their customers. There was a lot of confusion over our old warranty. Our new program will allow us to keep our customers satisfied and allow both parties to be satisfied with everyone sharing in the cost.

#### Coverage/Limitations

The coverage of this warranty is for the first breeding season or for the first 90 days after the bull is turned out, unless other arrangements are made. This warranty is good for death and all loss-of-use injuries. The warranty is void if this is caused by negligence or mistreatment of the bull. Replacement value will be the actual purchase cost of the Rippe Gelbvieh bulls covered minus any salvage value or other compensation received by the customer.

#### Claims

All claims must be reported to Rippe Gelbvieh within 24 hours of discovery and must be examined by a licensed veterinarian.

#### Injured

If the injury is not permanent and can be returned to service, Rippe Gelbvieh will work with you to supply a replacement bull to use, at no cost, until the original bull can be returned to service.

If the injury is permanent, Rippe Gelbvieh will supply a bull to finish out the season. At the end of the breeding season the customer can choose to keep the replacement bull as fulfillment of this warranty or return him to Rippe Gelbvieh and receive credit on next year's sale. The credit will equal the purchase price of the bull minus any salvage value from the original bull.

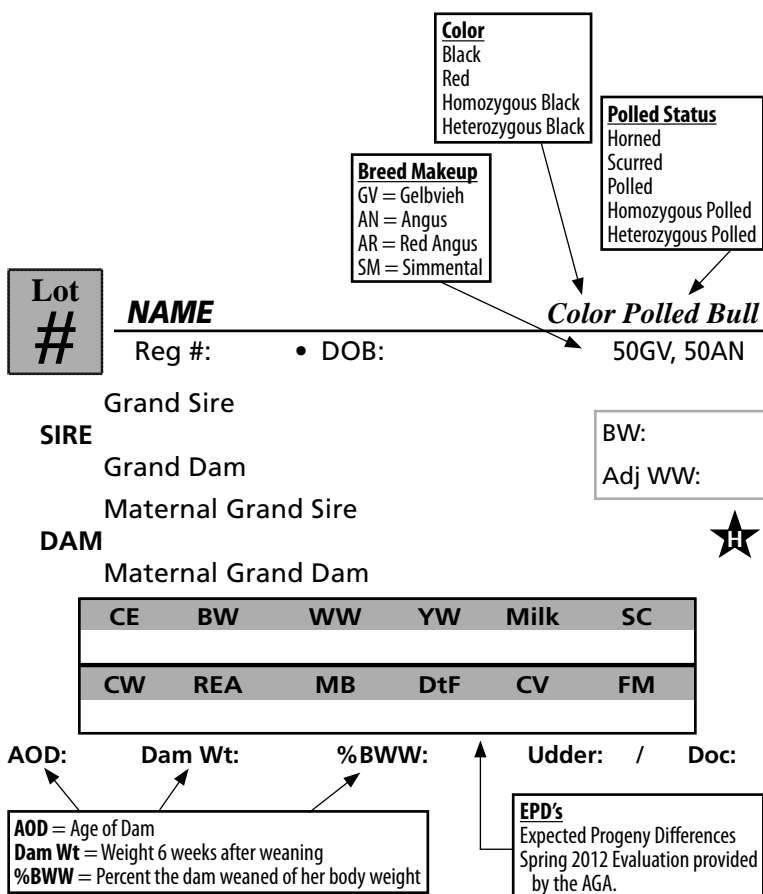
#### Death

When a Rippe Gelbvieh bull dies between the dates outlined above Rippe Gelbvieh will supply another bull to finish out the breeding season. At the end of the breeding season, the customer can either keep the replacement bull as fulfillment of this warranty or receive credit on next year's sale. The credit will equal the purchase price of the bull minus any compensation received by an insurance company.

#### Cost

Cost for the death and injury warranty will be 5% of purchase price, due at time of purchase. We feel that this is a reasonable cost where we can all share in the cost of a loss in a bull during the first breeding season. If a customer chooses not to cover their animal against death or injury, they assume all risk associated with the bull once it leaves our place.

# About The Catalog



**Homozygous** – If an animal is Homozygous for Polled or Black, you will not have a Horned or Red calf born out of this sire. If an animal is Heterozygous, it carries one allele for either horned/polled or red/black. If an animal simply has black or polled written, it has not been DNA tested for this trait.

★ – This year we decided to denote heifer bulls with the graphic ★, to aid in your bull selection. If you see a bull with an ★, Rippe Gelbvieh believes it is a heifer bull.

**Udder:** The first number is teat size and second references suspension. 9 is ideal. It represents very small teat size and very tight udder suspension. 1 represents very large, ballooned shape teat and a very pendulous suspension.

## Doc = Docility:

1 = Docile    2 = Restless    3 = Nervous  
 4 = Flighty    5 = Aggressive    6 = Very Aggressive

# Understanding EPD's

EPD's are calculated to predict genetic merit. Rippe Gelbvieh believes in the use of EPD's as they are the most accurate way of predicting genetic performance. Each association has their own database of EPD's. Different breeds have different averages and they should only be used to compare bulls of the same breed. EPD's are the best way to compare bulls of two different breeders.

## The EPD's used in this catalog are:

**Calving Ease (CE):** an EPD that is expressed as a ratio, with a higher ratio representing better (easier) calving ease. This value represents the direct influence a sire has on calving ease. Only first-calf heifer data is included.

**Birth Weight (BW):** predicts the difference, in pounds, for birth weight.

**Weaning Weight (WW):** predicts the difference, in pounds, for weaning weight (adjusted to age of dam and a standard 205 days of age). This is an indicator of growth from birth to weaning.

**Yearling Weight (YW):** predicts the expected difference, in pounds, for yearling weight (adjusted to standard 365 days of age). This is an indicator of growth from birth to yearling.

**Milk:** the genetic ability of a sire's daughters to produce milk expressed in pounds of weaning weight.

**Scrotal (SC):** value is expressed in centimeters of adjusted yearling scrotal circumference.

**Carcass Weight (CW):** expressed in pounds of carcass weight adjusted to a constant fat endpoint.

**Rib Eye Area (REA):** expressed in square inches of rib eye muscle area adjusted to a constant fat endpoint.

**Marbling (MB):** expressed in degrees of marbling score, a determinant of USDA Quality Grade. Value is adjusted to a constant fat endpoint.

**Days to Finish (DtF):** expressed in days to reach a constant fat endpoint, which is commonly used in the feedlot to determine when an animal is finished with the appropriate amount of fat cover. When evaluating two potential sires with comparable EPDs for other traits, the sire with the lesser value for DtF will produce progeny that will finish sooner with potentially lower feed costs.

**Carcass Value (CV):** expressed in dollar value per head, comparing progeny of one animal to another in dollar differences when progeny are sold on a grid. This value is a true economic comparison; it is not grid merit at a standard carcass weight as many breeds calculate. Projected carcass weight, penalties for "out" weight carcasses (too heavy or light), quality grade and yield grade premiums and discounts are all included in calculating this \$EPD value.

**Feedlot Merit (FM):** expressed in dollars per head, value passed to progeny. The Feedlot Merit EPD measures the dollar value associated with the expected gain and feedlot efficiency of progeny when fed in a "typical" feedlot arrangement.

# Rippe Gelbvieh Balancer and Gelbvieh Bull Sale

Black Balancer Bulls .....	Lots 1-33
Red Balancer Bulls .....	Lots 34-47
Black Purebred Bulls .....	Lots 48-54
Red Purebred Bulls.....	Lots 55-56

## ET Bulls:

The ET bulls are raised by a surrogate mother. Therefore, the bulls actual BW and WW are not a representation of the bulls genetics. Consequently, we have chosen not to provide this information as it is inaccurate. EPDs do a much better job of showing the genetic value of these bulls. If you would like to see the actual information on an ET bull please call before the sale.

## Semen Interest

Rippe Gelbvieh will retain 1/2 revenue sharing semen interest in every bull in the catalog unless otherwise noted. If we decide to collect a bull it will be at our expense and your convenience. If there is income after expenses it will be split evenly. This will only effect a very small portion of the bulls we sell.

## Videos of the Bulls

You will notice there are not many pictures of the bulls this year in the catalog. This is because we decided to video each and every bull and all the videos are on our website at [www.rippegelbvieh.com](http://www.rippegelbvieh.com). We did this because we take great pride in the structure of our bull lineup and this allows buyers to evaluate before they come to our sale.



**Free Lunch**  
**Thank You Chris & Rex**

# BLACK BALANCERS

Lot  
**1**

**104Y**

*Het Black Polled Bull*

Reg #: 1184924 • DOB: 1/14/11

50GV, 50AN

DVA Scout 553

**VRT LAZY TV WATCHMAN W021**

VRT Lazy TV Ms Peterblt T309

Mytty In Focus

**MISS MYTTY 959W ET**

DBRG 2193L

BW: 64

Adj WW: 559



CE	BW	WW	YW	Milk	SC
120	-5.6	30	70	18	0.3
CW	REA	MB	DtF	CV	FM
13	0.12	0.09	1.0	23.80	14.94

AOD: 2    Dam Wt: 1124    %BWW: 50%    Udder: 8/8    Doc: 1

104Y is a moderately framed, big ribbed son of Watchman. He is a true heifer bull as shown in his EPD profile. Take notice that his dam was an embryo calf out of Mytty In Focus. Top 1% CE, 1% BW, 35% MK, 40% SC, 50% CW, 50% RE, 40% CV.

Lot  
**2**

**107Y**

*Hom Black Polled Bull*

Reg #: 1196323 • DOB: 1/16/11

25GV, 75AN

BT Right Time 24J

**DBRG MR 24J 847U**

DBRG Ms Atlas 70N

Mytty In Focus

**MISS MYTTY 901W**

DBRG 728T

BW: 62

Adj WW: 559



CE	BW	WW	YW	Milk	SC
112	-3.0	40	85	18	NA
CW	REA	MB	DtF	CV	FM
17	0.15	0.13	4.1	32.70	24.67

AOD: 2    Dam Wt: 1206    %BWW: 47%    Udder: 9/9    Doc: 2

107Y is a heifer bull that comes with the extras. He is bold and true in his rib shape, wide based, and attractive. His sire sold on our sale 3 years ago to a commercial cattleman in Colorado. Look at his EPD's. Top 15% CE, 10% BW, 40% WW, 35% YW, 35% MK, 35% CW, 40% RE, 40% MB, 10% CV, 35% FM.

***All Potential carriers for AM, NS, OS  
have been tested and all cattle sell free  
of any known genetic defect.***

**Lot  
3****108Y***Hom Black Polled Bull*

Reg #: 1184925 • DOB: 1/16/11

50GV, 50AN

DVA Scout 553

**VRT LAZY TV WATCHMAN W021**

VRT Lazy TV Ms Peterblt T309

Gardens Prime Star

**DBRG MISS PRIME STAR 940W**

DBRG Miss Free Agent 503R

BW: 65

Adj WW: 631



CE	BW	WW	YW	Milk	SC
118	-5.2	30	70	17	0.3
CW	REA	MB	DtF	CV	FM
9	-0.01	0.12	1.1	20.15	14.94

AOD: 2    Dam Wt: 1180    %BWW: 53%    Udder: 9/9    Doc: 2

108Y is another heifer bull that is sound structured and complete. His dam weaned this guy at 53% of her body weight with an outstanding teat size and udder suspension. Top 1% CE, 1% BW, 45% MK, 40% SC, 50% MB, 50% CV.



**Mytty In Focus**  
**Sire of Lots 4, 8, 15, 17**

**Lot  
4****132Y***Hom Black & Hom Polled Bull*

Reg #: 1184929 • DOB: 1/25/11

50GV, 50AN

SAF Focus Of ER

**MYTTY IN FOCUS**

Mytty Countess 906

Solution

**DBRG MISS SOLUTION 9106W ET**

DBRG Foxi Roxi 8N

BW: 78

Adj WW: 634



CE	BW	WW	YW	Milk	SC
113	-1.9	45	92	14	0.4
CW	REA	MB	DtF	CV	FM
5	0.10	0.04	4.9	10.42	29.05

AOD: 2    Dam Wt: 1164    %BWW: 54%    Udder: 9/9    Doc: 2

132Y is a high performing bull with calving ease. Look at his growth EPD's. His dam weaned him at 54% of her body weight and did this with incredible teat and udder structure. Top 15% CE, 20% BW, 20% WW, 20% YW, 30% SC, 20% FM.

**Lot  
5****145Y***Hom Black Polled Bull*

Reg #: 1184932 • DOB: 2/4/11

63GV, 37AN

DVA Scout 553

**VRT LAZY TV WATCHMAN W021**

VRT Lazy TV Ms Peterblt T309

Highlight 066K

**DBRG MISS 066 962W**

DBRG Miss Ext 546R

BW: 68

Adj WW: 551



CE	BW	WW	YW	Milk	SC
114	-3.2	29	66	19	0.4
CW	REA	MB	DtF	CV	FM
14	0.08	0.10	1.3	25.37	10.35

AOD: 2    Dam Wt: 1204    %BWW: 46%    Udder: 9/9    Doc: 2.5

145Y is an athletic, long bodied herd sire. This guy is a guaranteed heifer bull. It is so easy to calve out cattle bred to Watchman. You just don't have problems and you have more live calves. Top 10% CE, 10% BW, 30% MK, 30% SC, 45% CW, 30% CV.



**DBRG 803U**  
**Balancer Heifer**

**Lot  
6****149Y***Het Black Polled Bull*

Reg #: 1184933 • DOB: 2/5/11

50GV, 25AN, 25AR

DVA Scout 553

**VRT LAZY TV WATCHMAN W021**

VRT Lazy TV Ms Peterblt T309

Platinum 443P

**DBRG MISS PLATINUM 904W**

DBRG 27T

BW: 83

Adj WW: 659



CE	BW	WW	YW	Milk	SC
113	-2.2	42	80	21	0.4
CW	REA	MB	DtF	CV	FM
21	0.26	0.10	0.3	33.57	14.99

AOD: 2    Dam Wt: 1106    %BWW: 60%    Udder: 7/8    Doc: 1

149Y is going to have a lot of friends on sale day. He is the heaviest muscled Watchman son we have. On top of that, he is sound structured, attractive and complete. His dam flat got it done for us this year weaning him at 60% of her body weight as a first calf heifer. Top 15% CE, 20% BW, 30% WW, 50% YW, 15% MK, 30% SC, 20% CW, 20% RE, 10% CV.

**Lot  
7****164Y ET***Het Black Homo Polled Bull*

Reg #: 1196325 • DOB: 2/11/11 50GV, 38AN, 12OT

Ellison 608F

**GOOD NIGHT 4743P**

CTR Susan 2907

Mr Bud 49J

**MS BUD 106L**

Ms 883H

BW: ET

Adj WW: ET

CE	BW	WW	YW	Milk	SC
105	0.4	43	85	17	0.3
CW	REA	MB	DtF	CV	FM
13	0.05	0.13	5.5	27.72	21.10

Doc: 1

164Y is the result of an embryo purchase we made from Warner Beef Genetics. This bull has gotten better and better. He is very sound structured, long bodied, attractive bull. If you want a little bit of extra pop and performance this bull will do just that. Top 25% WW, 35% YW, 45% MK, 40% SC, 50% CW, 40% MB, 20% CV, 45% FM.

**Lot  
8****173Y***Hom Black Polled Bull*

Reg #: 1184937 • DOB: 2/12/11 50GV, 50AN

SAF Focus of ER

**MYTTY IN FOCUS**

Mytty Countess 906

Echo 575E

**MISS ECHO M875**

Miss Night Hawk E426

BW: 92

Adj WW: 725

CE	BW	WW	YW	Milk	SC
109	0.7	47	89	23	0.4
CW	REA	MB	DtF	CV	FM
13	0.24	-0.03	-2.6	14.45	22.10

AOD: 9 Dam Wt: 1452 %BWW: 50% Udder: 5/5 Doc: 1

173Y had the biggest weaning weight of our entire pen. This 10 year old dam gets it done every year. Last year she weaned the heaviest bull and it was our high seller. 173Y is a sound structured high performing bull that can add some pounds to your next calf crop. Top 45% CE, 15% WW, 25% YW, 10% MK, 30% SC, 50% CW, 25% RE, 45% FM.

**Duane and his brother Larry**

## Flush Brothers -- Lots 9-13



**VRT Lazy TV Watchman W021**  
**Sire of Lots 9-13**

Rippe Gelbvieh purchased Watchman from Vaughn Thortenson in 2010. This is his first calf crop and the results speak for themselves. Watchman is a guaranteed heifer bull and is very sound structured and easy fleshing. He was in the top 1/3 for feed efficiency at Thortenson's as a yearling posting a -.9 RFI. Individually he had a 115 weaning weight ratio. In addition, he had a 116 IMF ratio with a 5.09% IMF scan.

*EPD's & Pedigree  
for Lots 9-13*

DVA Scout 553  
**VRT LAZY TV WATCHMAN W021**  
VRT Lazy TV Ms Peterblt T309  
Bon View New Design 878  
**DBRG MS HOT STUFF 408P**  
2193L

CE	BW	WW	YW	Milk	SC
114	-2.7	36	75	19	0.4
CW	REA	MB	DtF	CV	FM
17	0.14	0.14	2.5	33.18	15.57

We have never had a flush that has proven to be as consistent as this set of 6 bulls, and that's why we decided to highlight them together in the catalog. Lots 9 thru 14 are full brothers, lots 9 thru 13 are all flush mates and lot 14 is the donor dam's natural calf. Their dam was our best bred heifer in 2004. She has excelled in calving ease, carcass traits, and natural fleshing ability, and has an almost perfect udder at 7 years of age. All of these bulls are loaded with rib and every one of them is a heifer bull, we are going to leave it up to you to decide which bull is the best, because we sure haven't been able to choose. Top 10% CE, 15% BW, 30% MK, 30% SC, 35% CW, 40% RE, 40% MB, 10% CV.

**Lot**  
**9**

**142Y ET**

*Hom Black Scurred Bull*

Reg #: 1196317 • DOB: 2/4/11

50GV, 50AN



Doc: 2

**Lot**  
**10**

**150Y ET**

*Hom Black & Het Polled Bull*

Reg #: 1196318 • DOB: 2/6/11

50GV, 50AN



Doc: 1



**Lot 10**

**Lot 11**

**167Y ET** *Hom Black Scurred Bull*

Reg #: 1196319 • DOB: 2/11/11 50GV, 50AN



Doc: 1

**Lot 12**

**181Y ET** *Hom Black & Het Polled Bull*

Reg #: 1196321 • DOB: 2/14/11 50GV, 50AN



Doc: 1

**Lot 13**

**183Y ET** *Het Black & Hom Polled Bull*

Reg #: 1196322 • DOB: 2/15/11 50GV, 50AN



Doc: 2

**Lot 14**

**1194Y** *Het Black Scurred Bull*

Reg #: 1184961 • DOB: 3/21/11 50GV, 50AN

DVA Scout 553

VRT LAZY TV WATCHMAN W021

VRT Lazy TV Ms Peterblt T309

Bon View New Design 878

DBRG MS HOT STUFF 408P

2193L

BW: 88

Adj WW: 605

CE	BW	WW	YW	Milk	SC
112	-2.1	37	77	19	0.4
CW	REA	MB	DtF	CV	FM
17	0.14	0.14	2.5	33.24	16.67

AOD: 7 Dam Wt: 1408 %BWW: 48% Udder: 8/8 Doc: 2

1194Y is a full brother to lots 9 thru 13. The only major difference is he was born later because we flushed his dam first. 1194Y is deep bodied, sound structured, and complete. This one might be the best one of the bunch. Top 10% CE, 35% BW, 25% WW, 20% YW, 20% MK, 10% SC, 35% RE, 20% FM.

Lot  
**15**

**186Y ET**

*Hom Black & Hom Polled Bull*

Reg #: 1184908 • DOB: 2/15/11

50GV, 50AN

SAF Focus Of ER

**MYTTY IN FOCUS**

Mytty Countess 906

Fullback 011G

**VRT LAZY TV MS FULLBACK L643**

VRT Lazy TV E271

BW: ET

Adj WW: ET

CE	BW	WW	YW	Milk	SC
114	-1.1	43	90	20	0.7
CW	REA	MB	DtF	CV	FM
8	0.17	0.08	0.7	18.61	28.54

Doc: 1

186Y is a balanced, sound structured, and high performing bull. A few years back, we purchased the "Pick of Thortenson Gelbvieh's herd" and his dam was the female we chose. Look at this bull's EPD profile. Homozygous Black and Polled. Top 10% CE, 35% BW, 25% WW, 20% YW, 20% MK, 10% SC, 35% RE, 20% FM.

Lot  
**16**

**189Y**

*Het Black Polled Bull*

Reg #: 1184981 • DOB: 2/15/11

38GV, 62AN

Connealy Tobin

**CONNEALY SULLIVAN 83A**

Breesha of Conanga 1251

Midnight Pacemaker 148G

**PACE QUEEN 38N**

Ms Alice

BW: 94

Adj WW: 678

CE	BW	WW	YW	Milk	SC
NA	1.0	45	94	22	NA
CW	REA	MB	DtF	CV	FM
NA	NA	NA	NA	NA	32.06

AOD: 8    Dam Wt: 1520    %BWW: 45%    Udder: 4/5    Doc: 1

189Y is all about pounds and performance. There is no doubt he is a big framed bull out of Connealy Sullivan. Look at his growth EPD's. Last time I checked we still get paid by the pound. Top 20% WW, 15% YW, 15% MK, 15% FM.

Lot  
**17**

**193Y**

*Hom Black Scurred Bull*

Reg #: 1184986 • DOB: 2/16/11

25GV, 75AN

SAF Focus Of ER

**MYTTY IN FOCUS**

Mytty Countess 906

BT Right Time 24J

**DBRG 69T**

DBRG Miss Rippe 918J

BW: 102

Adj WW: 656

CE	BW	WW	YW	Milk	SC
113	0.5	42	92	23	0.4
CW	REA	MB	DtF	CV	FM
10	0.14	0.13	6.5	26.22	32.80

AOD: 4    Dam Wt: 1430    %BWW: 46%    Udder: 7/7    Doc: 1

193Y is a high performing In Focus son. It is not often that we will keep a bull with an actual BW over 100 pounds, but when they are this complete phenotypically and genetically, they get to stay around. Look at this growth and carcass numbers. Top 15% CE, 30% WW, 20% YW, 10% MK, 30% SC, 40% RE, 40% MB, 25% CV, 15% FM.

Lot  
**18**

**195Y**

*Hom Black & Hom Polled Bull*

Reg #: 1184988 • DOB: 2/17/11

75GV, 25AN

DVA Scout 553

**VRT LAZY TV WATCHMAN W021**

VRT Lazy TV Ms Peterblt T309

Solution

**DBRG MISS SOLUTION 9135W ET**

DBRG Foxi Roxi 8N

BW: 65

Adj WW: 567



CE	BW	WW	YW	Milk	SC
117	-3.8	35	71	13	0.3
CW	REA	MB	DtF	CV	FM
18	0.09	0.03	1.6	23.33	10.37

AOD: 2    Dam Wt: 1196    %BWW: 47%    Udder: 9/9    Doc: 3

195Y is athletic, thick topped and attractive. On top this, he is a heifer bull whose dam scored with an excellent mammary scores. Homozygous Black & Polled. Top 2% CE, 5% BW, 40% SC, 30% CW, 35% CV.



Lot  
**19**

**1103Y**

*Hom Black & Hom Polled Bull*

Reg #: 1184983 • DOB: 2/21/11

50GV, 50AN

VVFG Flying H Exclusive

**PURE POWER**

Mavis 206M

N Bar Emulation Ext

**E BAR V QUEEN MOTHER C025**

E Bar V Queen Mother 352

BW: 95

Adj WW: 633

CE	BW	WW	YW	Milk	SC
108	0.6	38	85	19	-0.2
CW	REA	MB	DtF	CV	FM
11	0.10	0.19	0.6	30.45	27.27

AOD: 9    Dam Wt: 1370    %BWW: 46%    Udder: 7/7    Doc: 2.5

Look at 1103Y's carcass numbers. He is complete and sound structured. Has been a standout all summer long. Lot 19 is out of an excellent EXT dam. Top 50% WW, 35% YW, 30% MK, 15% MB, 15% CV, 25% FM.

Lot  
**20**

**1129Y**

*Hom Black Polled Bull*

Reg #: 1184940 • DOB: 3/4/11

50GV, 50AN

DVA Scout 553

**VRT LAZY TV WATCHMAN W021**

VRT Lazy TV Ms Peterblt T309

Bon View New Design 878

**DBRG MISS 878 575R**

DBRG Miss Echo M875

BW: 96

Adj WW: 650

CE	BW	WW	YW	Milk	SC
105	-0.1	40	78	24	0.3
CW	REA	MB	DtF	CV	FM
21	0.18	0.09	-0.7	31.69	14.49

AOD: 6    Dam Wt: 1388    %BWW: 47%    Udder: 8/8    Doc: 3

1129 is a very wide based Watchman son. He is out of an 878 dam who exhibits a great udder. If you are looking to add a little milk but still have a great udders take a look at this bull. Top 40% WW, 4% MK, 40% SC, 20% CW, 35% RE, 15% CV.

Lot  
**21**

**1133Y**

*Het Black & Hom Polled Bull*

Reg #: 1184942 • DOB: 3/4/11

50GV, 50AR

BUF BFCK Cherokee Cnyn 4912

**OVER NINE MILE CANYON 319N**

PVRA Design Leann 179

Highlight 066K

**DBRG 7107T ET**

DBRG Ms Freedom 101L

BW: 88

Adj WW: 637

CE	BW	WW	YW	Milk	SC
107	0.1	39	77	14	0.6
CW	REA	MB	DtF	CV	FM
15	0.31	0.07	-0.4	25.69	14.25

AOD: 4    Dam Wt: 1440    %BWW: 44%    Udder: 5/5    Doc: 1

1133Y is a sound structured, easy fleshing bull. His dam came straight from our ET program and his sire we have sold many bulls out of. Take note that he is Homozygous Polled. Top 45% WW, 15% SC, 40% CW, 15% RE, 30% CV.

Lot  
**22**

**1134Y**

*Het Black Scurred Bull*

Reg #: 1191647 • DOB: 3/4/11

50GV, 25AN, 25AR

DVA Scout 553

**VRT LAZY TV WATCHMAN W021**

VRT Lazy TV Ms Peterblt T309

BUF BFCK Cherokee Cnyn 4912

**DBRG 732T**

DBRG Ms Atlas 7N

BW: 84

Adj WW: 573



CE	BW	WW	YW	Milk	SC
116	-3.6	33	68	19	0.3
CW	REA	MB	DtF	CV	FM
13	0.22	0.13	2.1	28.12	8.45

AOD: 4    Dam Wt: 1214    %BWW: 47%    Udder: 7/7    Doc: 1

This bull has flat come on since weaning. He is big ribbed, sound and flat good. 1134Y combines the calving ease and marbling of Watchman with the muscling of Cherokee Canyon. On top of this he is a heifer bull. Top 3% CE, 10% BW, 30% MK, 40% SC, 50% CW, 25% RE, 40% MB, 20% CV.

Lot  
**23**

**1157Y**

*Het Black Polled Bull*

Reg #: 1184945 • DOB: 3/9/11 50GV, 25AN, 25AR

BUF BFCK Cherokee Cnyn 4912

**DBRG MR CC 863U ET**

DBRG Foxi Roxi 8N

Bon View New Design 878

**DBRG MS 878 418P**

Ms Atlas 273M

BW: 78

Adj WW: 619



CE	BW	WW	YW	Milk	SC
113	-2.5	38	80	17	0.3
CW	REA	MB	DtF	CV	FM
34	0.34	0.14	6.6	41.56	19.85

AOD: 7 Dam Wt: 1570 %BWW: 39% Udder: 8/8 Doc: 3

1157Y is a big bodied, sound structured bull. He combines 878 and Cherokee Canyon in his pedigree. His 7 year old dam has a great udder and he is a heifer bull. Look at his EPD's. Top 15% CE, 15% BW, 50% WW, 50% YW, 45% MK, 40% SC, 2% CW, 10% RE, 40% MB, 2% CV, 50% FM.

Lot  
**24**

**1158Y**

*Hom Black & Hom Polled Bull*

Reg #: 1184946 • DOB: 3/9/11 50GV, 25AN, 25AR

BFCK Cherokee Cnyn 4912

**DBRG MR CC 863U ET**

DBRG Foxi Roxi 8N

Sleepy 161F ET

**MS SLEEPY 145L**

RAF Miss Peggy 380

BW: 85

Adj WW: 686

CE	BW	WW	YW	Milk	SC
107	0.2	44	82	14	0.2
CW	REA	MB	DtF	CV	FM
34	0.33	0.08	2.9	34.58	15.38

AOD: 10 Dam Wt: 1450 %BWW: 47% Udder: 7/7 Doc: 1

686 pound adjusted weaning weight out of a 10 year old dam that still has a very good udder. 1157 is soft, sound and has great shape. The reason 863U is going to be very popular is because of sons like this one. Top 20% WW, 45% YW, 50% SC, 2% CW, 15% RE, 10% CV.



**Lot 24**

**Lot  
25****1161Y****Hom Black Polled Bull**

Reg #: 1184947 • DOB: 3/9/11 50GV, 25AN, 25AR

BFCK Cherokee Cnyn 4912

**DBRG MR CC 863U ET**

DBRG Foxi Roxi 8N

Traveler 0907K

**DBRG MISS 0907K 822U**

DBRG 28S

BW: 90

Adj WW: 614

CE	BW	WW	YW	Milk	SC
103	1.8	47	88	10	0.8
CW	REA	MB	DtF	CV	FM
30	0.20	0.07	4.1	33.87	20.62

AOD: 3 Dam Wt: 1280 %BWW: 48% Udder: 7/8 Doc: 1

1161Y is a stout made, heavy muscled bull. His weaning weight EPD is in the top of the breed. This bull will add pounds and performance to your calf crop. Top 15% WW, 25% YW, 4% SC, 4% CW, 30% RE, 10% CV, 45% FM.

**Lot  
26****1189Y****Het Black & Hom Polled Bull**

Commercial • DOB: 3/19/11 25GV, 50AN, 25SM

BFCK Cherokee Cnyn 4912

**DBRG MR CC 863U ET**

DBRG Foxi Roxi 8N

B/R New Frontier 095

**MISS 095 842U**

JF First Glance 216M

BW: 88

Adj WW: 683

Sire's	BW	WW	YW	MK	CW	RE	MB
	.1	50	95	12	48	.44	.1
Dam's	BW	WW	YW	MK	CW	RE	MB
	-.4	30.8	74.4	2.6	7.1	.28	.76

AOD: 3 Dam Wt: 1390 %BWW: 48% Udder: 6/7 Doc: 1

1189 is a very interesting, long bodied bull. He comes from a cow that I purchased as an embryo. He is 25% Gelbvieh, 25% Simmental, 50% Angus and is non-registered. Lee Leachman calls them stabilizers and sells them like hot cakes. This bull has a proven registered pedigree and genetics on both sides. Commercial cattlemen capture the extra heterosis with this guy. Lot 26 sire's EPD's rank Top 60% BW, 10% WW, 20% YW, 90% MK, 1% CW, 4% RE, 65% MB. His dam's EPD's rank in the top 55% BW, 30% WW, 15% YW, 50% MK, 15% CW, 15% RE, 3% MB.

**Lot  
27****1191Y****Het Black Polled Bull**

Reg #: 1184958 • DOB: 3/20/11 50GV, 25AN, 25AR

BFCK Cherokee Cnyn 4912

**DBRG MR CC 863U ET**

DBRG Foxi Roxi 8N

B/R New Frontier 095

**DBRG 796T**

DBRG Ms High Class 439P

BW: 92

Adj WW: 665

CE	BW	WW	YW	Milk	SC
105	0.7	47	93	16	NA
CW	REA	MB	DtF	CV	FM
36	0.36	0.11	5.8	38.46	28.06

AOD: 4 Dam Wt: 1352 %BWW: 49% Udder: 6/6 Doc: 1

1191Y is a very stout, high performing bull that has as much dimension as any bull in the sale. Look at this bull's EPD profile. Take notice of 863U's calves. His performance data keeps coming back great. In a few years, I expect we will be selling semen on this bull. Top 15% WW, 15% YW, 1% CW, 10% RE, 3% CV, 25% FM.

Lot  
**28**

**1204Y**

*Het Black & Hom Polled Bull*

Reg #: 1184965 • DOB: 3/25/11 50GV, 25AN, 25AR

DVA Scout 553

**VRT LAZY TV WATCHMAN W021**

VRT Lazy TV Ms Peterblt T309

BFCK Cherokee Cnyn 4912

**DBRG 871U ET**

DBRG Foxi Roxi 8N

BW: 75

Adj WW: 662



CE	BW	WW	YW	Milk	SC
115	-3.2	39	79	17	0.5
CW	REA	MB	DtF	CV	FM
26	0.25	0.07	2.0	33.30	17.16

AOD: 3 Dam Wt: 1478 %BWW: 45% Udder: 8/8 Doc: 1

1204Y has flawless structure, and is as complete and sound as you make one. This bull is very interesting from a breeding piece point of view. If anyone ever wanted to sample our program, this bull would be a good place to start. His dam is a full sister to 863U and he is out of Watchman. Guaranteed heifer bull who is Homozygous Polled, and Homozygous Good. Top 5% CE, 10% BW, 45% WW, 45% MK, 20% SC, 10% CW, 20% RE, 10% CV.

Lot  
**29**

**1209Y**

*Het Black Polled Bull*

Reg #: 1184967 • DOB: 3/27/11 50GV, 50AR

BUF BFCK Cherokee Cnyn 4912

**OVER NINE MILE CANYON 319N**

PVRA Design Leann 719

Bennett Landmark J377

**MISS LANDMARK 533R**

Wonderful Miss 312N

BW: 84

Adj WW: 643

CE	BW	WW	YW	Milk	SC
105	0.0	40	73	13	0.6
CW	REA	MB	DtF	CV	FM
14	0.38	0.02	-0.8	20.90	7.28

AOD: 6 Dam Wt: 1464 %BWW: 44% Udder: 6/6 Doc: 1

1209Y is a very sound structured bull whose sire has raised many bulls for us. Don't forget to look at the videos of these bulls. It is bulls like this that keep balancers hot in the industry. Top 40% WW, 15% SC, 45% CW, 10% RE, 45% CV.

Lot  
**30**

**1212Y**

*Black Polled Bull*

Reg #: 1196324 • DOB: 3/28/11 50GV, 50AN

DVA Scout 553

**VRT LAZY TV WATCHMAN W021**

VRT Lazy TV Ms Peterblt T309

BT Right Time 24J

**DBRG MISS 24J 840U ET**

2193L

BW: 83

Adj WW: 600

CE	BW	WW	YW	Milk	SC
112	-2.2	36	76	18	0.4
CW	REA	MB	DtF	CV	FM
17	0.14	0.11	1.2	30.25	15.69

AOD: 3 Dam Wt: 1326 %BWW: 45% Udder: 5/6 Doc: 2

1212Y is a long bodied attractive herdsire. His dam comes straight from our embryo program. It is hard to pick a hole in these Watchman calves. Top 15% CE, 20% BW, 35% MK, 30% SC, 35% CW, 40% RE, 15% CV.

Lot  
**31**

**1226Y**

*Black Polled Bull*

Reg #: 1184971 • DOB: 4/8/11 50GV, 25AN, 25AR

BUF BFCK Cherokee Cnyn 4912

**DBRG MR CC 863U ET**

DBRG Foxi Roxi 8N

ACF High Prime 2245

**DBRG 718T**

DBRG Miss Landmark 533R

BW: 84

Adj WW: 642

CE	BW	WW	YW	Milk	SC
108	0.0	45	86	14	0.5
CW	REA	MB	DtF	CV	FM
34	0.35	0.12	7.8	39.45	20.12

AOD: 4 Dam Wt: 1378 %BWW: 47% Udder: 7/7 Doc: 1

1226Y is a brother to a bull we sold on last year's sale to Disanti Farms and this one is just as good. He is sound structured, soft, and complete. Take a look at his growth numbers. Top 20% WW, 30% YW, 20% SC, 2% CW, 10% RE, 50% MB, 3% CV, 45% FM.

Lot  
**32**

**1228Y**

*Het Black Polled Bull*

Reg #: 1184972 • DOB: 4/10/11 50GV, 25AN, 25AR

BUF BFCK Cherokee Cnyn 4912

**DBRG MR CC 863U ET**

DBRG Foxi Roxi 8N

Connealy Front Page 0228

**MISS FRONT PAGE 520R**

Miss Latigo 319N

BW: 80

Adj WW: 633

CE	BW	WW	YW	Milk	SC
112	-2.4	43	86	16	0.4
CW	REA	MB	DtF	CV	FM
30	0.29	0.10	3.1	37.73	22.58

AOD: 6 Dam Wt: 1354 %BWW: 47% Udder: 7/7 Doc: 2

1228Y one sound and complete herdsire. There is a lot to like about 863U calves, they consistently have great natural dimension on a very sound structure. This guy has a very balanced EPD profile. Did I mention he was a heifer bull? Top 15% CE, 15% BW, 25% WW, 20% YW, 30% SC, 4% CW, 15% RE, 4% CV, 40% FM.

Lot  
**33**

**1240Y**

*Het Black Polled Bull*

Reg #: 1184976 • DOB: 4/24/11 50GV, 25AN, 25AR

BUF BFCK Cherokee Cnyn 4912

**DBRG MR CC 863U ET**

DBRG Foxi Roxi 8N

N Bar Emulation Ext

**DBRG MISS EXT 580R**

25NTL

BW: 84

Adj WW: 668

CE	BW	WW	YW	Milk	SC
110	-1.2	38	76	15	0.3
CW	REA	MB	DtF	CV	FM
32	0.26	0.13	5.9	39.72	14.00

AOD: 6 Dam Wt: 1302 %BWW: 51% Udder: 9/9 Doc: 1

1240Y dam has the best udder on our place. She is a moderate framed EXT dam who weaned her calf at 51% of her body weight. He was born a little late but good cattlemen will find him. Full brother was one of our top bulls last year. Top 35% CE, 35% BW, 50% WW, 40% SC, 3% CW, 20% RE, 40% MB, 2% CV.

# RED BALANCERS

Lot  
**34**

**101Y**

*Red Polled Bull*

Reg #: 1184905 • DOB: 1/12/11

38GV, 62AR

VRT Lazy TV Classic M358

**VRT LAZY TV SECOND CLASS R87**

VRT Lazy TV Ms Dynamics L354

LJC Mission Statement P27

**MISS MS 927W ET**

Gold Digger 54R

BW: 60

Adj WW: 584



CE	BW	WW	YW	Milk	SC
111	-2.6	43	93	24	0.8
CW	REA	MB	DtF	CV	FM
17	0.45	0.07	5.5	30.89	32.93

AOD: 2    Dam Wt: 1090    %BWW: 54%    Udder: 9/9    Doc: 1

101Y is extra stout. Lots of red meat packed into this cowboy. Wait, he is a heifer bull too. Look at the EPD spread in this bull. By the way, his dam has a terrific udder and weaned this guy at 51% of her body weight. Top 25% CE, 15% BW, 25% WW, 15% YW, 4% MK, 4% SC, 35% CW, 3% RE, 15% CV, 15% FM.



Lot  
**35**

**118Y**

*Red Polled Bull*

Reg #: 1184977 • DOB: 1/21/11

20GV, 80AR

Beckton Julian GG B571

**HXC CONQUEST 4405P**

HXC Ellie May MA638

Over Nine Mile Canyon 319N

**MISS 9 MILE 9111W**

DBRG 039K

BW: 79

Adj WW: 654



CE	BW	WW	YW	Milk	SC
109	-3.7	37	77	14	0.2
CW	REA	MB	DtF	CV	FM
17	0.29	0.08	0.0	28.93	16.67

AOD: 2    Dam Wt: 1150    %BWW: 57%    Udder: 9/9    Doc: 1

Conquest cattle are the right kind. 118Y is a big ribbed bull with a lot of beef. Did you notice his dam weaned him at 57% of her body weight? Did you also notice the udder scores on his dam? Top 45% CE, 5% BW, 50% SC, 35% CW, 15% RE, 20% CV.

Lot  
**36**

**129Y ET**

*Red Polled Bull*

Reg #: 1184919 • DOB: 1/24/11

38GV, 62AR

Basin Ext 5233

**BASIN EXT 7455**

Basin Chinook 06P7

SLC Freedom 178F ET

**DBRG MS FREEDOM 229M**

DBRG Miss Rippe 933J

BW: ET

Adj WW: ET

CE	BW	WW	YW	Milk	SC
NA	-0.6	32	69	12	NA
CW	REA	MB	DtF	CV	FM
NA	NA	NA	NA	NA	11.08

Doc: 1

129Y would be an excellent female maker. Not only is this bull sound structured, deep bodied and heavy muscled but his dam has been a great donor for our program. Take a look at this bull's video, he flat gets it done. Top 45% BW.

Lot  
**37**

**138Y**

*Red Polled Bull*

Reg #: 1184930 • DOB: 2/4/11

25GV, 75AR

Bieber Make Mimi 7249

**FEDDES BIG SKY R9**

Feddes Lakina 310

CAW CFLD Rebellas Robinhood

**DBRG MS RED 63N**

DBRG 857H

BW: 63

Adj WW: 590

CE	BW	WW	YW	Milk	SC
107	-1.6	34	79	22	0.2
CW	REA	MB	DtF	CV	FM
19	0.21	0.06	1.3	28.98	23.28

AOD: 8    Dam Wt: 1684    %BWW: 35%    Udder: 6/3    Doc: 1

138Y's dam gets it done again. We have sold bull after bull out of this cow. 138Y is deep bodied and heavy muscled. There is a lot of butt and guts in this bull. 138Y was a twin but the other one was put on another cow. Top 25% BW, 15% MK, 50% SC, 25% CW, 30% RE, 20% CV, 40% FM.

Lot  
**38**

**151Y**

*Red Scurred Bull*

Reg #: 1184978 • DOB: 2/8/11

38GV, 62AR

Beckton Julian GG B571

**HXC CONQUEST 4405P**

HXC Ellie May MA638

SLC Freedom 178F ET

**DBRG MS FREEDOM 229M**

DBRG Miss Rippe 933J

BW: 76

Adj WW: 589



CE	BW	WW	YW	Milk	SC
109	-4.4	29	68	10	-0.1
CW	REA	MB	DtF	CV	FM
12	0.14	0.03	2.6	18.30	13.24

AOD: 9    Udder: 2/2    Doc: 1

My notes on 151Y said moderate framed, big bodied and heavy muscled. Then I looked at the papers and he is a heifer bull. We have sold bull after bull out of this donor dam. In fact, we have registered 19 calves out of her. Top 45% CE, 2% BW, 40% RE.



**Lot 39**

**Lot  
39**

**153Y**

*Red Polled Bull*

Reg #: 1184984 • DOB: 2/8/11

25GV, 75AR

Basin Ext 5233

**BASIN EXT 7455**

Basin Chinook 06P7

BUF BFCK Cherokee Cnyn 4912

**DBRG 27T**

DBRG 857H

BW: 94

Adj WW: 636

CE	BW	WW	YW	Milk	SC
NA	1.3	42	82	17	NA
CW	REA	MB	DtF	CV	FM
NA	NA	NA	NA	NA	17.91

AOD: 4    Dam Wt: 1400    %BWW: 45%    Udder: 2/3    Doc: 1

Wow, take a look at this bull's video. It is pretty tough to make them much better. He is stout and rugged made, big bodied and attractive. Michael believes he would have done very well in Denver. This bull is flat impressive. Top 20% WW, 45% YW, 45% MK.

**Lot  
40**

**157Y**

*Red Polled Bull*

Reg #: 1184979 • DOB: 2/9/11

25GV, 75AR

Beckton Julian GG B571

**HXC CONQUEST 4405P**

HXC Ellie May MA638

Over Nine Mile Canyon 319N

**DBRG 105S**

DBRG 857H

BW: 80

Adj WW: 584

CE	BW	WW	YW	Milk	SC
106	-3.2	35	76	14	0.2
CW	REA	MB	DtF	CV	FM
14	0.31	0.10	-2.4	27.55	17.64

AOD: 5    Dam Wt: 1560    %BWW: 37%    Udder: 7/7    Doc: 1

157Y was a standout on pasture all summer long. The conquest calves are just good cattle. 157Y is moderately framed, big bodied, and heavy muscled. Top 10% BW, 50% SC, 45% CW, 4% RE, 20% CV.

Lot  
**41**

**171Y ET**

*Red Scurred Bull*

Reg #: 1184907 • DOB: 2/11/11

38GV, 62AR

BUF Crk Chf 824-1658

**BUF BFCK CHEROKEE CNYN 4912**

MRM 1431 8611 9109

SLC Freedom 178F ET

**DBRG MS FREEDOM 229M**

DBRG Miss Rippe 933J

BW: ET

Adj WW: ET



CE	BW	WW	YW	Milk	SC
111	-1.7	35	72	13	0.3
CW	REA	MB	DtF	CV	FM
19	0.35	0.04	3.0	27.39	11.81

Doc: 1

171Y is a heavy muscled, bid bodied, sound structured bull. His sire Cherokee Canyon goes back in many pedigrees in our program. His semen sells for at least \$100/straw. This bull is very balanced in his phenotype and EPD profile. Top 25% CE, 25% BW, 40% SC, 25% CW, 10% RE, 25% CV.



Lot  
**42**

**180Y**

*Red Polled Bull*

Reg #: 1184985 • DOB: 2/14/11

25GV, 75AR

Basin Ext 5233

**BASIN EXT 7455**

Basin Chinook 06P7

BUF BFCK Cherokee Cnyn 4912

**DBRG MISS CC 551R**

35N

BW: 80

Adj WW: 652

CE	BW	WW	YW	Milk	SC
NA	-1.5	38	77	16	NA
CW	REA	MB	DtF	CV	FM
NA	NA	NA	NA	NA	15.46

AOD: 6    Dam Wt: 1340    %BWW: 49%    Udder: 7/7    Doc: 1

180Y is a long bodied, big ribbed, attractive herdsire. Michael was responsible for finding his sire to use in our AI program out of MT and what a good find he has been. All but one bull made it to our bull pen. Rippe Gelbvieh is the only place you can find balancer's out of this sire. Top 30% BW, 50% WW.

Lot  
**43**

**1117Y**

*Red Hom Polled Bull*

Reg #: 1184992 • DOB: 2/28/11

75GV, 25AR

Buddy 7R

**BUDDY BOY T729**

R251

BUF BFCK Cherokee Cnyn 4912

**DBRG MISS CC 570R**

1M

BW: 93

Adj WW: 661

CE	BW	WW	YW	Milk	SC
105	1.3	46	89	15	0.4
CW	REA	MB	DtF	CV	FM
18	0.36	0.01	-2.1	24.71	23.33

AOD: 6    Dam Wt: 1406    %BWW: 47%    Udder: 6/7    Doc: 1

Stout, heavy muscled, and thick. This guy puts the pounds on the right way. Rock solid females in his pedigree. Sold a full brother last year. 660 pound adjusted weaning weight. Top 15% WW, 25% YW, 30% SC, 30% CW, 10% RE, 40% CV, 40% FM.



Lot  
**44**

**1118Y**

*Red Scurred Bull*

Reg #: 1184993 • DOB: 3/1/11

75GV, 25AR

Buddy 7R

**BUDDY BOY T729**

R251

BUF BFCK Cherokee Cnyn 4912

**DBRG MISS CC 837U ET**

Ms Freedom 229M

BW: 90

Adj WW: 648

CE	BW	WW	YW	Milk	SC
106	1.1	43	85	12	0.3
CW	REA	MB	DtF	CV	FM
15	0.25	-0.06	-0.9	14.26	21.10

AOD: 3    Dam Wt: 1156    %BWW: 56%    Udder: 7/7    Doc: 1

1118Y is big topped and easy fleshing. It does not surprise me that his dam weaned him at 56% of her body weight. His granddam has 3 bulls in this sale alone. Commercial cattlemen flat love these Buddy Boy calves as they are sound structured, deep bodied, and heavy muscled. Top 25% WW, 35% YW, 40% SC, 40% CW, 20% RE, 45% FM.

Lot  
**45**

**1201Y**

*Red Polled Bull*

Reg #: 1184964 • DOB: 3/23/11

75GV, 25AR

GKT Buddy 7R

**CRAN BUDDY BOY T729**

CRAN R251

Platinum 443P

**DBRG 791T**

Ms Party Girl 401P

BW: 90

Adj WW: 661

CE	BW	WW	YW	Milk	SC
109	-0.1	38	76	16	0.4
CW	REA	MB	DtF	CV	FM
16	0.28	-0.04	-1.1	17.17	14.00

AOD: 4    Dam Wt: 1188    %BWW: 56%    Udder: 8/8    Doc: 1

Rugged and stout made is how I would describe 1201Y. His dam weaned him at 56% of her body weight and did this with a great udder. This guy has all the pieces commercial cattlemen are looking for. Top 45% CE, 50% WW, 30% SC, 40% CW, 20% RE.

Lot  
**46**

**1224Y**

*Red Polled Bull*

Reg #: 1184970 • DOB: 4/6/11

50GV, 25AN, 25AR

BUF BFCK Cherokee Cnyn 4912

**DBRG MR CC 863U ET**

DBRG Foxi Roxi 8N

Bon View New Design 878

**MISS 878 504R**

Ms Atlas 6N

BW: 88

Adj WW: 646

CE	BW	WW	YW	Milk	SC
109	-0.9	44	89	17	0.6
CW	REA	MB	DtF	CV	FM
39	0.38	0.15	8.2	40.11	25.80

AOD: 6    Dam Wt: 1578    %BWW: 41%    Udder: 7/7    Doc: 4

1224Y is a high performing, sound structured bull that combines two great sires in his pedigree. 878 from the Angus and Cherokee Canyon from Red Angus. Take a look at his EPD profile as it extremely balanced. Top 45% CE, 40% BW, 20% WW, 25% YW, 45% MK, 15% SC, 1% CW, 10% RE, 35% MB, 2% CV, 20% FM.

Lot  
**47**

**1235Y**

*Red Polled Bull*

Reg #: 1184974 • DOB: 4/18/11

50GV, 25AN, 25AR

BUF BFCK Cherokee Cnyn 4912

**DBRG MR CC 863U ET**

DBRG Foxi Roxi 8N

E&B 878 New Design 4135

**MISS N D 4135 8152U**

Ms Red Alert 411P

BW: 95

Adj WW: 670

CE	BW	WW	YW	Milk	SC
107	1.9	45	90	13	0.4
CW	REA	MB	DtF	CV	FM
21	0.14	0.07	4.8	31.04	26.05

AOD: 3    Dam Wt: 1358    %BWW: 49%    Udder: 7/7    Doc: 1

Do you sell your cattle by the pound? 1235Y had the biggest Adj 205 day weight of the red balancers. Look at the growth in his EPD's. Not only that, go look at how sound this bull is on his video. Outcross Red Balancer genetics. Top 20% WW, 20% YW, 30% SC, 20% CW, 20% RE, 25% CV, 30% FM.

# BLACK PUREBREDS

Lot  
**48**

**188Y ET**

*Het Black & Het Polled Bull*

Reg #: 1184914 • DOB: 2/15/11 Purebred Gelbvieh

Cocoa 35C

**BLACK POWER**

Lady Symbol 451D

Carolina CPR

**MS CPR 409P**

DBRG Ms Dusty 205M

BW: ET

Adj WW: ET

CE	BW	WW	YW	Milk	SC
106	1.7	47	86	19	0.8
CW	REA	MB	DtF	CV	FM
14	0.14	0.17	5.1	32.39	17.68

Doc: 1

Heavy muscled and big topped. Look at this bull's performance on his EPD's to go along with the carcass. It is darn tough to find many purebred Gelbvieh bulls with this guy's genetic package. Top 20% WW, 20% YW, 20% MK, 15% SC, 35% CW, 35% RE, 10% MB, 2% CV, 20% FM.

Lot  
**49**

**1100Y**

*Hom Black Polled Bull*

Reg #: 1184989 • DOB: 2/20/11 Purebred Gelbvieh

Goldrush Visa J40

**STRAIT FORWARD R89**

Miss Goldrush M99

Titus 880K

**DBRG 37S**

DBRG 707G

BW: 88

Adj WW: 636

CE	BW	WW	YW	Milk	SC
107	0.2	41	85	6	0.4
CW	REA	MB	DtF	CV	FM
4	0.08	0.03	2.5	7.48	23.56

AOD: 5 Dam Wt: 1200 %BWW: 53% Udder: 6/6 Doc: 1

1100Y is what a purebred bull is supposed to look like. He is stout, powerful, and high performing. His dam weaned him at 53% of her body weight. Homozygous Black. Top 50% CE, 30% BW, 40% WW, 20% YW, 45% SC, 50% MB, 50% CV, 10% FM.



**Lot 49**

**Lot  
50****1105Y ET***Hom Black & Hom Polled Bull*

Reg #: 1184916 • DOB: 2/23/11 Purebred Gelbvieh

VVFG Flying H Exclusive

**PURE POWER**

Mavis 206M

Fullback 011G

**VRT LAZY TV MS FULLBACK L643**

VRT Lazy TV E271

BW: ET

Adj WW: ET

CE	BW	WW	YW	Milk	SC
109	1.6	44	87	20	0.3
CW	REA	MB	DtF	CV	FM
11	0.19	0.12	-0.3	25.36	22.83

Doc: 1

1105Y is a very interesting bull. We purchased the pick of Thortenson Gelbvieh's cowherd and his dam L643 is who we picked. She is very sound structured with a great udder and excelled in fleshing ability and marbling. 1105Y is sure to add marbling and performance. Did I mention Homozygous Black and Polled? Top 35% CE, 30% WW, 15% YW, 15% MK, 50% CW, 25% RE, 15% MB, 10% CV, 10% FM.

**Lot  
51****1146Y***Black Hom Polled Bull*

Reg #: 1184944 • DOB: 3/7/11 Purebred Gelbvieh

GKT Buddy 7R

**CRAN BUDDY BOY T729**

CRAN R251

JBOB Carolina CPR

**MS CPR 409P**

DBRG Ms Dusty 205M

BW: 96

Adj WW: 676

CE	BW	WW	YW	Milk	SC
107	1.3	41	79	16	0.4
CW	REA	MB	DtF	CV	FM
12	0.22	-0.02	-1.7	13.76	14.74

AOD: 7 Dam Wt: 1360 %BWW: 50% Udder: 5/5 Doc: 1

Big, stout, heavy muscled and high performing. If your cattle sell by the pound, you need to look at this bull. He has the highest weaning weigh of the purebreds. Put this guy on some English cows and watch your calves flat grow. Top 50% CE, 40% WW, 35% YW, 45% MK, 45% SC, 45% CW, 20% RE, 30% CV, 30% FM.

**Lot  
52****1165Y***Het Black Polled Bull*

Reg #: 1184948 • DOB: 3/9/11 Purebred Gelbvieh

GKT Buddy 7R

**CRAN BUDDY BOY T729**

CRAN R251

Rodeo Drive J14

**MS RODEO DRIVE 78N**

Miss Cocoa 810H

BW: 67

Adj WW: 565

CE	BW	WW	YW	Milk	SC
118	-3.3	26	58	13	0.4
CW	REA	MB	DtF	CV	FM
14	0.23	-0.07	-1.7	11.54	2.48

AOD: 8 Dam Wt: 1300 %BWW: 43% Udder: 7/7 Doc: 2

This bull has gotten better and better. He is a sure-fire heifer bull whose 8 year old dam has an excellent udder at her age. 1146Y is very sound and stout just like all the Buddy Boy calves. Top 2% CE, 3% BW, 45% SC, 35% CW, 15% RE, 35% CV.



Lot  
**53**

**1169Y**

*Black Polled Bull*

Reg #: 1184950 • DOB: 3/12/11 Purebred Gelbvieh

GKT Buddy 7R

**CRAN BUDDY BOY T729**

CRAN R251

Atlas 712G

**DBRG MS ATLAS 7N**

DBRG Ms Dusty 125L

BW: 80

Adj WW: 629



CE	BW	WW	YW	Milk	SC
112	-1.2	37	75	15	0.0
CW	REA	MB	DtF	CV	FM
13	0.22	-0.05	-0.3	12.14	13.75

AOD: 8 Dam Wt: 1462 %BWW: 43% Udder: 4/4 Doc: 1

1169Y is a big topped, stout made, sound structured bull that would work great on a set of English based cows. Check out the balance in his EPD profile. He is very gentle and out of a very productive 8 year old dam. Top 15% CE, 15% BW, 45% YW, 50% MK, 40% CW, 20% RE, 35% CV, 35% FM.

Lot  
**54**

**1229Y**

*Black Polled Bull*

Reg #: 1184973 • DOB: 4/11/11 88GV

GKT Buddy 7R

**CRAN BUDDY BOY T729**

CRAN R251

Highlight 066K

**13S**

Ms Robin Hood 459P

BW: 92

Adj WW: 657

CE	BW	WW	YW	Milk	SC
104	1.7	44	88	15	0.5
CW	REA	MB	DtF	CV	FM
17	0.18	-0.06	-0.7	15.81	24.31

AOD: 5 Dam Wt: 1610 %BWW: 41% Udder: 7/7 Doc: 2

1229Y is a very interesting bull. For being young, he is thick made and flat good. Take a look at his video for yourself. Look at this weaning weight and growth EPD's. Top 30% WW, 15% YW, 50% MK, 35% SC, 25% CW, 25% RE, 25% CV, 10% FM.

## Hybrid Vigor Advantages

### Advantage of Crossbred vs. Straightbred

#### Trait

Cow efficiency (calf ww/cow wt.) ..... 8%

Cow longevity ..... 38%

Cow lifetime productivity ..... 25%

Calf weaning performance ..... 5%

Calf yearling performance ..... 4%

**Total Avg. Annual Dollar Impact..... \$116.88**

# RED PUREBREDS

Lot  
**55**

**179Y**

*Red Het Polled Bull*

Reg #: 1184938 • DOB: 2/14/11 Purebred Gelbvieh

GKT Buddy 7R

**CRAN BUDDY BOY T729**

CRAN R251

Polled Gizmo 17Z

**DBRG MISS RIPPE 918J**

709G

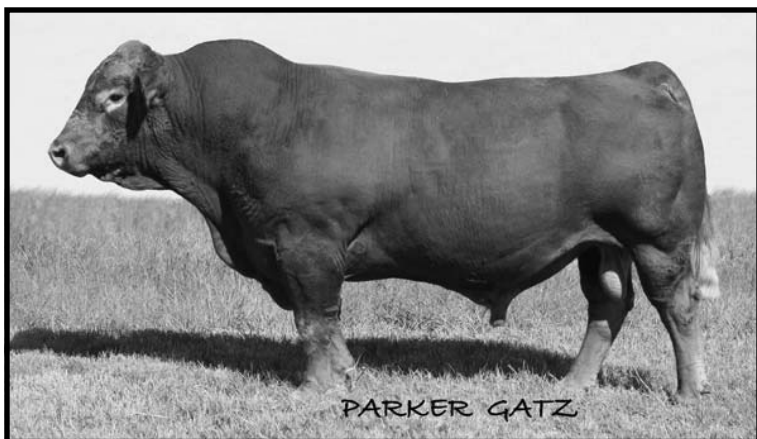
BW: 83

Adj WW: 666

CE	BW	WW	YW	Milk	SC
109	0.5	38	78	19	0.3
CW	REA	MB	DtF	CV	FM
19	0.20	-0.09	0.3	14.95	16.92

AOD: 12 Dam Wt: 1506 %BWW: 44% Udder: 3/4 Doc: 2

Longevity in your cowherd has a big effect on your bottom line as it reduces the amount of replacements you have to develop. Well, 179Y is out of a 12 year old dam. He is heavy muscled, and sound structured. Look at the balance in his EPD's. Top 35% CE, 35% BW, 35% YW, 20% MK, 20% CW, 20% RE, 25% CV, 25% FM.



**CRAN Buddy Boy T729**  
**Sire of Lots 43, 44, 45, 55, 56**

Lot  
**56**

**1174Y**

*Red Hom Polled Bull*

Reg #: 1184951 • DOB: 3/16/11 Purebred Gelbvieh

GKT Buddy 7R

**CRAN BUDDY BOY T729**

CRAN R251

PD Grand Primo 43G5

**MS GRAND PREMO 191L**

709G

BW: 81

Adj WW: 645

CE	BW	WW	YW	Milk	SC
112	-0.2	38	78	18	0.3
CW	REA	MB	DtF	CV	FM
21	0.26	-0.07	-2.2	18.06	16.92

AOD: 10 Dam Wt: 1496 %BWW: 43% Udder: 5/5 Doc: 3

1174Y is a complete red purebred bull. He is very sound structured and heavy muscled. He nursed a 10 year old dam that has been very productive for us. Did I mention he was Homozygous Polled? Check out the balance in his EPD's. Top 15% CE, 25% BW, 35% YW, 25% MK, 15% CW, 15% RE, 20% CV, 25% FM.



**↑ Rippe Gelbvieh**

**6775 Rd D**

**Hubbell, NE 68375**

PRSRSTSD

U.S. Postage

PAID

Kearney, NE

68847

Permit No. 135